






**Scotsman**<sup>®</sup>

ICE EXPERIENCES

ICE  
IS  
US




**MOFFAT**<sup>®</sup>

## Gourmet cube - MXG Series

Small gourmet cube - 8 g, 21mm dia x H 25mm   
 Medium gourmet cube - 20 g, 30mm dia x H 34mm   
 Large gourmet cube - 39 g, 38mm dia x H 41mm 

# Scotsman®

## Gourmet cube - AC/EC Series

Small gourmet cube - 8 g, 21mm dia x H 25mm   
 Medium gourmet cube - 20 g, 30mm dia x H 34mm   
 Large gourmet cube - 39 g, 38mm dia x H 41mm 

# Scotsman®

### MXG 327

Cube size:  
Medium Cube  
Condensing System:  
Air Cooled  
Max daily production:  
149kg Medium Cubes



Dimensions (Head only):  
W 568mm  
D 704mm  
H 721mm  
Recommended bin:  
NB 193 – 129kg storage

### MXG 437

Cube size:  
Medium Cube  
Condensing System:  
Air Cooled  
Max daily production:  
165kg Medium Cubes



Dimensions (Head only):  
W 773mm  
D 705mm  
H 721mm  
Recommended bin:  
NB 393 – 178kg storage  
NB 530 – 243kg storage

### MXG 638

Cube size:  
Medium Cube  
Condensing System:  
Air Cooled  
Max daily production:  
335kg Medium Cubes



Dimensions (Head only):  
W 733mm  
D 704mm  
H 1128mm  
Recommended bin:  
NB 393 – 178kg storage  
NB 530 – 243kg storage  
NB 948 – 406kg storage

### DXG 35

Cube size:  
Medium Cube  
Condensing System:  
Air Cooled  
Max daily production:  
27kg Medium Cubes



Storage bin capacity:  
11kg  
Dimensions:  
W 308mm  
D 515mm  
H 1696mm (incl. legs)

### AC 47

Cube size:  
Medium Cube  
Condensing System:  
Air Cooled  
Max daily production:  
24kg Medium Cubes



Storage bin capacity:  
9kg  
Dimensions:  
W 386mm  
D 600mm  
H 645mm

### AC 87

Cube size:  
Small Cube  
Condensing System:  
Air Cooled  
Max daily production:  
39kg Small Cubes



Storage bin capacity:  
19kg  
Dimensions:  
W 531mm  
D 600mm  
H 875mm (incl. legs)

### AC 107

Cube size:  
Medium Cube  
Condensing System:  
Air Cooled  
Max daily production:  
51kg Medium Cubes



Storage bin capacity:  
23kg  
Dimensions:  
W 531mm  
D 600mm  
H 930mm (incl. legs)

### EC 47

Cube size:  
Medium Cube  
Condensing System:  
Air Cooled  
Max daily production:  
24kg Medium Cubes



Storage bin capacity:  
9kg  
Dimensions:  
W 386mm  
D 600mm  
H 645mm

### EC 57

Cube size:  
Small Cube  
Condensing System:  
Air Cooled  
Max daily production:  
31kg Small Cubes



Storage bin capacity:  
12kg  
Dimensions:  
W 386mm  
D 600mm  
H 695mm

### EC 87

Cube size:  
Small Cube  
Condensing System:  
Air Cooled  
Max daily production:  
39kg Small Cubes



Storage bin capacity:  
19kg  
Dimensions:  
W 531mm  
D 600mm  
H 825mm (incl. legs)

### EC 107

Cube size:  
Medium Cube  
Condensing System:  
Air Cooled  
Max daily production:  
51kg Medium Cubes



Storage bin capacity:  
23kg  
Dimensions:  
W 531mm  
D 600mm  
H 930mm (incl. legs)

### EC 127

Cube size:  
Medium Cube  
Condensing System:  
Air Cooled  
Max daily production:  
74kg Small Cubes



Storage bin capacity:  
39kg  
Dimensions:  
W 680mm  
D 600mm  
H 1009mm (incl. legs)

### EC 177

Cube size:  
Medium Cube  
Condensing System:  
Air Cooled  
Max daily production:  
83kg Medium Cubes



Storage bin capacity:  
48kg  
Dimensions:  
W 680mm  
D 600mm  
H 1079mm (incl. legs)

### EC 206

Cube size:  
Small Cube  
Condensing System:  
Air Cooled  
Max daily production:  
93kg Medium Cubes



Storage bin capacity:  
50kg  
Dimensions:  
W 1250mm  
D 622mm  
H 809mm (incl. legs)

### EC 226

Cube size:  
Small Cube  
Condensing System:  
Air Cooled  
Max daily production:  
152kg Small Cubes



Storage bin capacity:  
70kg  
Dimensions:  
W 1078mm  
D 719mm  
H 1082mm (incl. legs)

Note: Ice production rate is measured with the water temperature at 10°C and an ambient temperature of 21°C.

**XSafe** All Scotsman ice machines feature the all-natural sanitation system.

## Scotsman EcoX

Scotsman is engaged in an important project to develop a new range of icemakers using only natural refrigerants, which are fully compliant with the F Gas Regulation and have almost ZERO Ozone Depletion Potential and Global Warming Potential.

## XSafe

Scotsman ice machines feature the all-natural sanitation system. Resulting in protection from viruses and bacterium, preventing formation of slime, mould and yeast, operating behind the scenes 24/7 365 days to keep equipment clean and safe.

AC Models – Gravity drain  
EC Models – Pump out drain & XSafe.

Note: Ice production rate is measured with the water temperature at 10°C and an ambient temperature of 21°C.

**XSafe** All Scotsman ice machines feature the all-natural sanitation system.

# Dice Ice - NU/NW/MC Series

Half dice cube 6 g  
W 10 x D 22 x H 28 mm

Dice cube 10 g  
W 22 x D 22 x H 22 mm

Large dice cube 15 g  
W 28 x D 22 x H 28 mm

**NU 100**  
Cube size: Dice, half dice  
Condensing System: Air Cooled  
Max daily production: 45kg Dice Cubes

**NU 150**  
Cube size: Dice, half dice, large dice  
Condensing System: Air Cooled  
Max daily production: 68kg Dice Cubes

**NU 220**  
Cube size: Dice, half dice  
Condensing System: Air Cooled  
Max daily production: 100kg Dice Cubes

**NU 300**  
Cube size: Dice, half dice  
Condensing System: Air Cooled  
Max daily production: 135kg Dice Cubes



**Storage bin capacity:** 20kg  
**Dimensions:** W 600mm, D 610mm, H 770mm (incl. legs)

**Storage bin capacity:** 37kg  
**Dimensions:** W 650mm, D 690mm, H 870mm (incl. legs)

**Storage bin capacity:** 37kg  
**Dimensions:** W 600mm, D 610mm, H 770mm (incl. legs)

**Storage bin capacity:** 37kg  
**Dimensions:** W 650mm, D 690mm, H 1003mm (incl. legs)

**NW 307**  
Cube size: Dice, half dice  
Condensing System: Air Cooled  
Max daily production: 175kg Dice Cubes

**NW 507**  
Cube size: Dice, half dice  
Condensing System: Air Cooled  
Max daily production: 199kg Dice Cubes

**NW 457**  
Cube size: Dice, half dice  
Condensing System: Air Cooled  
Max daily production: 208kg Dice Cubes



**Dimensions (Head only):** W 560mm, D 610mm, H 662mm  
**Recommended bin:** NB 193 – 129kg storage, NB 393 – 181kg storage

**Dimensions (Head only):** W 560mm, D 610mm, H 662mm  
**Recommended bin:** NB 193 – 129kg storage, NB 393 – 181kg storage, NB 530 – 243kg storage

**Dimensions (Head only):** W 760mm, D 620mm, H 575mm  
**Recommended bin:** NB 393 – 181kg storage, NB 530 – 243kg storage

**NW 608**  
Cube size: Dice, half dice  
Condensing System: Air Cooled  
Max daily production: 290kg Dice Cubes

**NW 1008**  
Cube size: Dice, half dice, large dice  
Condensing System: Air Cooled  
Max daily production: 456kg Dice Cubes

**NW 1408**  
Cube size: Dice, half dice, large dice  
Condensing System: Air Cooled  
Max daily production: 630kg Dice Cubes

**MC 1448**  
Cube size: Dice ice  
Condensing System: Air Cooled  
Max daily production: 706kg Dice Cubes

**MC 1848**  
Cube size: Dice ice  
Condensing System: Air Cooled  
Max daily production: 868kg Dice Cubes

**MC 2148**  
Cube size: Dice ice  
Condensing System: Air Cooled - Remote  
Max daily production: 893kg Dice Cubes



**Dimensions (Head only):** W 760mm, D 620mm, H 575mm  
**Recommended bin:** NB 393 – 181kg storage, NB 530 – 243kg storage, NB 948 – 406kg storage

**Dimensions (Head only):** W 760mm, D 620mm, H 1000mm  
**Recommended bin:** NB 393 – 181kg storage, NB 530 – 243kg storage, NB 948 – 406kg storage, UBH 1100 – 553kg storage

**Dimensions (Head only):** W 760mm, D 620mm, H 1000mm  
**Recommended bin:** NB 530 – 243kg storage, NB 948 – 406kg storage, UBH 1100 – 553kg storage

**Dimensions (Head only):** W 1219mm, D 610mm, H 737mm  
**Recommended bin:** NB 948 – 406kg storage, UBH 1100 – 553kg storage

**Dimensions (Head only):** W 1219mm, D 610mm, H 737mm  
**Recommended bin:** NB 948 – 406kg storage, UBH 1100 – 553kg storage

**Dimensions (Head only):** W 1219mm, D 610mm, H 737mm  
**Recommended bin:** NB 948 – 406kg storage, UBH 1100 – 553kg storage

# Scotsman®

# Flake Ice - AF/MF Series

Flake ice  
Residual water content 25%

**AF 87**  
Cube type: Flake ice  
Condensing System: Air Cooled  
Max daily production: 68kg Flake ice

**AF 107**  
Cube type: Flake ice  
Condensing System: Air Cooled  
Max daily production: 126kg Flake ice

**AF 127**  
Cube type: Flake ice  
Condensing System: Air Cooled  
Max daily production: 121kg Flake ice

**AF 156**  
Cube type: Flake ice  
Condensing System: Air Cooled  
Max daily production: 150kg Flake ice

**MF 36**  
Cube type: Flake ice  
Condensing System: Air Cooled  
Max daily production: 193kg Flake ice



**Storage bin capacity:** 25kg  
**Dimensions:** W 535mm, D 620mm, H 890mm (incl. legs)

**Storage bin capacity:** 30kg  
**Dimensions:** W 592mm, D 622mm, H 1078mm (incl. legs)

**Storage bin capacity:** 40kg  
**Dimensions:** W 950mm, D 605mm, H 872mm (incl. legs)

**Storage bin capacity:** 60kg  
**Dimensions:** W 950mm, D 605mm, H 1083mm (incl. legs)

**Dimensions (Head only):** W 563mm, D 536mm, H 531mm  
**Recommended bin:** NB 193 – 129kg storage, NB 393 – 181kg storage

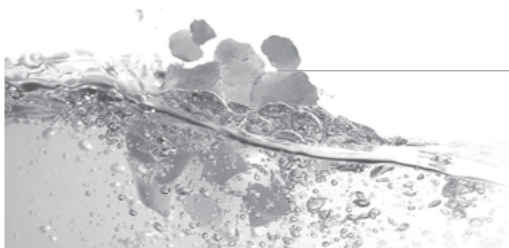
**Note:** Ice production rate is measured with the water temperature at 10°C and an ambient temperature of 21°C.

**XSafe** All Scotsman ice machines feature the all-natural sanitation system.

**Note:** Ice production rate is measured with the water temperature at 10°C and an ambient temperature of 21°C.

**XSafe** All Scotsman ice machines feature the all-natural sanitation system.

# Scotsman®



## Nugget Ice - MFN Series

Cubelet ice - 1g  
Ø11mm x H 13mm



### MFN 47

**Cube size:**  
Nugget Ice  
**Condensing System:**  
Air Cooled  
**Max daily production:**  
270kg Nugget



**Dimensions (Head only):**  
W 538mm  
D 663mm  
H 650mm  
**Recommended bin:**  
NB 193 – 129kg storage  
NB 393 – 181kg storage  
NB 530 – 243kg storage  
SIS 300 – 137kg + 73kg storage  
SIS 700 – 318kg + 73kg storage

### MFN 57

**Cube size:**  
Nugget Ice  
**Condensing System:**  
Air Cooled  
**Max daily production:**  
305kg Nugget



**Dimensions (Head only):**  
W 538mm  
D 663mm  
H 785mm  
**Recommended bin:**  
NB 393 – 178kg storage  
NB 530 – 243kg storage  
NB 948 – 406kg storage  
SIS 300 – 137kg + 73kg storage  
SIS 700 – 318kg + 73kg storage

## Cubelet Ice - TCL/AFC Series

Cubelet ice - 1g  
W 16mm x D 15mm x H 7-8mm



### TCL 180

**Cube size:**  
Cubelet Ice and water dispenser  
**Condensing System:**  
Air Cooled  
**Max daily production:**  
119kg Cubelet



**Storage bin capacity:**  
9kg  
**Dimensions:**  
W 390mm  
D 660mm  
H 878mm

### AFC 80

**Cube size:**  
Cubelet Ice  
**Condensing System:**  
Air Cooled  
**Max daily production:**  
75kg Cubelet



**Storage bin capacity:**  
25kg  
**Dimensions:**  
W 535mm  
D 620mm  
H 890mm (incl. legs)

### AFC 134

**Cube size:**  
Cubelet Ice  
**Condensing System:**  
Air Cooled  
**Max daily production:**  
135kg Cubelet



**Storage bin capacity:**  
44kg  
**Dimensions:**  
W 950mm  
D 605mm  
H 872mm (incl. legs)

**Note:** Ice production rate is measured with the water temperature at 10°C and an ambient temperature of 21°C.

**XSafe** All Scotsman ice machines feature the all-natural sanitation system.

## Dispensing Units - HD Series

### HD 22

Hotel Ice Dispenser  
Storage Capacity 59kg



**Dimensions:**  
W 559mm D 850mm H 1351mm  
**Compatible with:**  
NW 307  
NW 507

### HD 30

Hotel Ice Dispenser  
Storage Capacity 81kg



**Dimensions:**  
W 726mm D 850mm H 1351mm  
**Compatible with:**  
NW 457  
NW 608  
NW 1008

### HD 30 W

Worksite Ice Dispenser  
Storage Capacity 81kg



**Dimensions:**  
W 770mm D 820mm H 1351mm  
**Compatible with:**  
NW 457  
NW 608  
NW 1008

## Storage Bins - NB/SB/UBH/SIS Series

### NB 193

Storage capacity 129kg



**Dimensions:**  
W 567mm D 843mm H 1043mm

### SB 293

Storage capacity 123kg



**Dimensions:**  
W 769mm D 848mm H 800mm

### NB 393

Storage capacity 181kg



**Dimensions:**  
W 768mm D 843mm H 1043mm

### NB 530

Storage capacity 243kg



**Dimensions:**  
W 770mm D 873mm H 1268mm

### NB 948

Storage capacity 406kg



**Dimensions:**  
W 1235mm D 865mm H 1268mm

### UBH 1100

Storage capacity 553kg



**Dimensions:**  
W 1220mm D 1128mm H 1427mm

### UBH 1600

Storage capacity 812kg



**Dimensions:**  
W 1524mm D 1125mm H 1731mm

### SIS 700

Storage capacity 318kg



**Dimensions:**  
W 885mm D 1267mm H 1803mm

### SIS 1350

Storage capacity 613kg



**Dimensions:**  
W 1748mm D 1267mm H 1803mm

**Note:** Ice production rate is measured with the water temperature at 10°C and an ambient temperature of 21°C.

**XSafe** All Scotsman ice machines feature the all-natural sanitation system.

## Scotsman® Ice and its shapes



Crystal clear, pure, hard and long-lasting ice cubes. Individually formed by spraying water onto a subcooled horizontal evaporator. Its fast cooling action and slow dilution make drinks chilled for a long time. Available in three different sizes and weights to meet any requirement in terms of ease of use and quality results.

Classic six sides ice cube. Its greater surface for heat exchange allows a fast chilling of all drinks. The vertical evaporator technology of this ice cube guarantees large ice production at lower operating costs. Available in several different sizes, it is highly appreciated in QSR and coffee chains applications.

Compressed flake ice available in two different types: Nugget, regular micro-cubes and Cubelet, irregular chips. Nugget & Cubelet are suitable for multiple uses and are the fastest moving ice-type in QSR applications in the last few years. Excellent when used with carbonated drinks as well as smoothies and perfect for food and plates display. Long lasting, easy to use, high and fast displacement and hands-free dispensing: no wonder this type of ice is so successful!

Ice in its most natural shape, it is made at a temperature just below zero degrees Celsius. Highly versatile and suitable for multiple applications: fish display counters, buffet display, frozen drinks preparation as well as fast chilling of wine & champagne buckets. It comes in two different variations: Flake with 25% residual water content and Super Flake with 15% residual water content.

With less than 2% residual water content, it's very dry and it's the coldest form of ice. It's made by irregular fragments of ice with a variable thickness that can be adjusted between 1 to 2mm. Ideal for industrial processes, for fish and sea-food display and perishable goods transportation, as well as to optimize dough temperature. Versatile, moulding to any shape, melts at a slow and regular rate to keep food at maximum freshness.



## Ice Size Guide

Restaurants	500g per person
Cocktails	1.5 kg per person
Accommodation	2.5 kgs per guest
Hospitals	2 kgs per person (average)
Nursing Homes	500g per person
Industrial Mining	2.5 kgs per person
Seafood display cases	48 kgs per cubic meter
Cold Plate Systems	Add 50% per day to holding capacity
QSR	40% of cup capacity

### Ice Cube Capacity

Small Gourmet	8g, Dia-21mm H-25mm
Medium Gourmet	20g, Dia-30mm H-34mm
Large Gourmet	39g, Dia-38mm H-41mm
Half Dice	6g, 10mm x 22mm 22mm
Full Dice	10g, 22mm x 22mm x 22mm
Large Dice	17g, 29mm x 24mm x 29mm

### Ice Usage Guide

Half dice ice cube	QSR soft drinks, general purpose, high volume
Full dice ice cube	Alcohol, bagging, hot areas, high volume
Large dice ice cubes	Alcohol, high volume, restaurants, bagging
Gourmet cubes	Boutique bars, high end bars and restaurants
Nugget ice	Hospitals, clinics, displays, blended drinks
Flake ice	Display cabinets, fast cooling, bakeries, etc.
Cubelet ice	QSR drinks, restaurants, display



Australia  
moffat.com.au

Australia  
Moffat Pty Limited  
Victoria/Tasmania  
740 Springvale Road  
Mulgrave, Victoria 3170  
Telephone 03-9518 3888  
Facsimile 03-9518 3833  
vsales@moffat.com.au

New South Wales  
Telephone 02-8833 4111  
nswsales@moffat.com.au

South Australia  
Telephone 03-9518 3888  
vsales@moffat.com.au

Queensland  
Telephone 07-3630 8600  
qldsales@moffat.com.au

Western Australia  
Telephone 08-9413 2400  
wasales@moffat.com.au

an Ali Group Company



The Spirit of Excellence