

# PF400 SERIES

## Pet Friendly Drinking Fountain

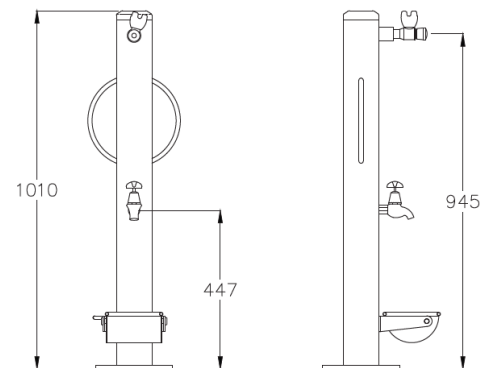
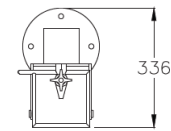
The PF400 is a strong, robust fountains perfect for dog offleash areas, council parks, and outdoor environments where access to water for dogs is required.



### KEY FEATURES

- Australian made
- Strong mild steel construction
- 316 stainless steel tippable dog bowl
- Fully welded tap mount socket
- Bottle refill as option
- Vandal resistant
- Easy installation and easy access for maintenance
- Powder coated in premium Dulux steel shield coating finish
- Full parts and technical back up service

With a water bubblers for people and a self-returning tap and easy tipping bowl for dogs as standard. An additional water bottle refill option for pet owners while exercising or enjoying the outdoors with their furry friends.



### Technical Specifications

Total Height	1000mm
Width	100mm
Dog Bowl Height	170mm



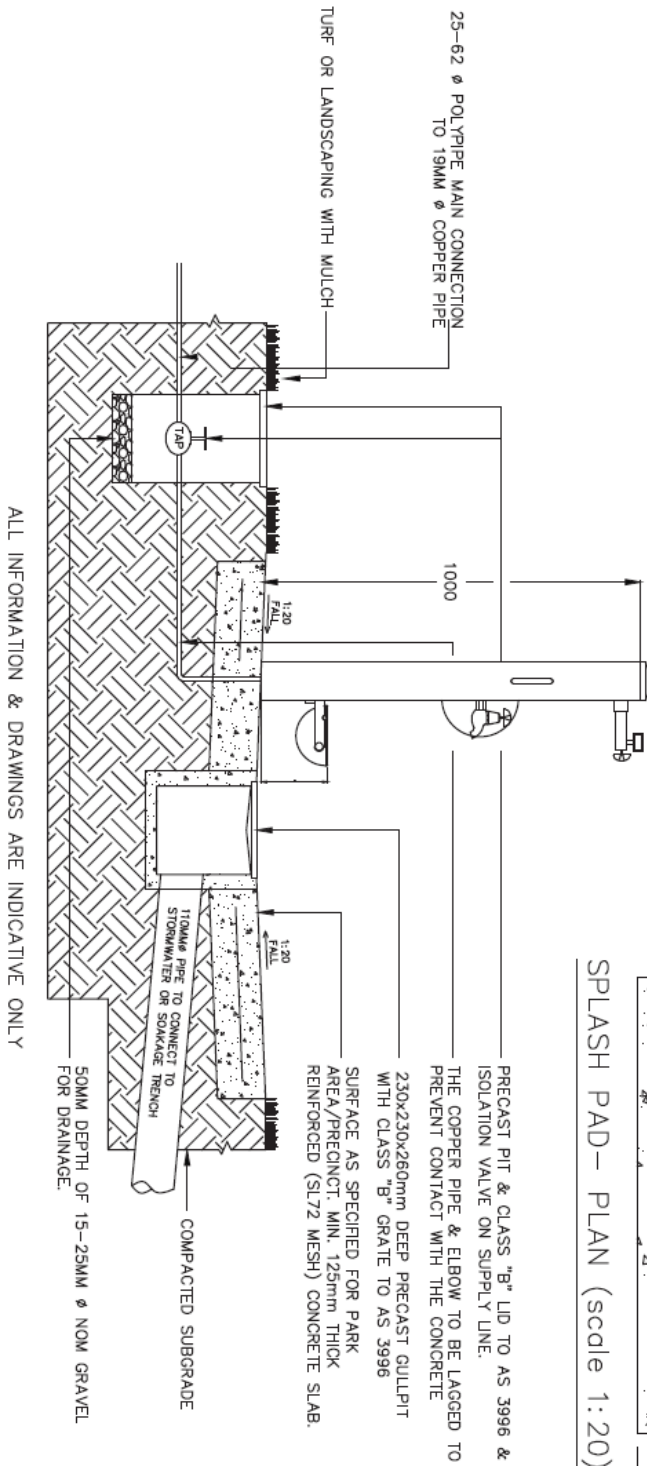
### Model Selection

<b>AC-UFF-DFFPF400SURF</b>	PF400 Outdoor Pet Accessible Fountain Powdercoat Standard w/Tap, Dog Bowl
----------------------------	---

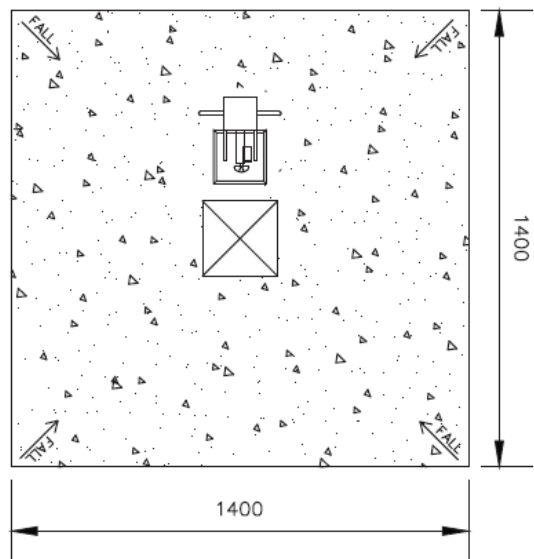
Your Partner in Cool.

**AQUA  
COOLER**

# TECHNICAL SPECIFICATIONS



SPLASH PAD - PLAN (scale 1:20)



Your Partner in Cool.

**AQUA**  
**COOLER**