

BF200WM SERIES

Wall-Mounted Bottle Refill Strip

These dynamically designed bottle refill strips can be retrofitted to existing environments to offer a safe and hygienic alternative to standard bubblers. Minimising water waste from filling bottles using bubbler fittings.

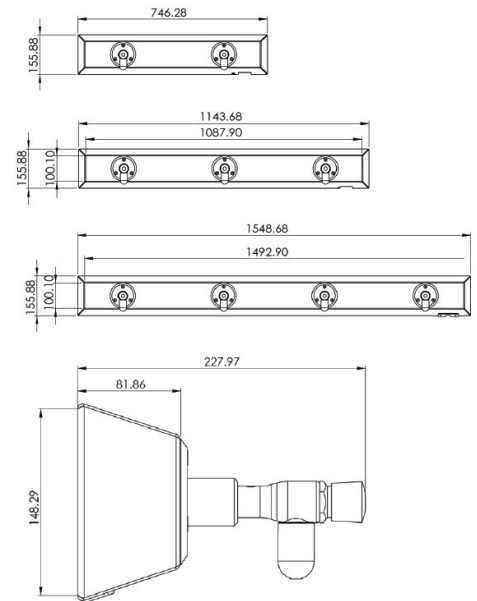
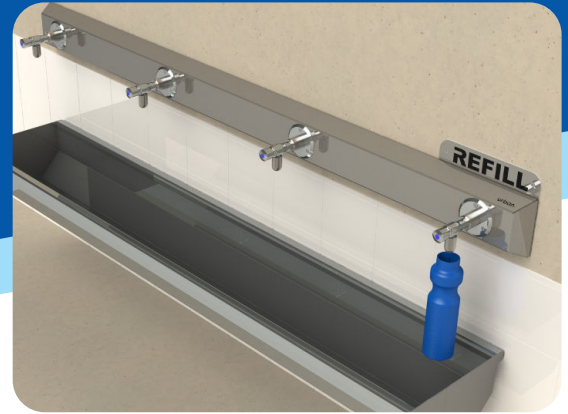


KEY FEATURES

- 316 Stainless Steel
- Solid Construction
- Vandal Resistant Tap Flange
- Easy Push Activator (self-returning)
- Polished Finish
- 316 S/S Fixings
- Australian Made
- Perfect for installation above existing school bubbler troughs

All of our bottle refill strips have:

- Push and fill functionality
- Spring loaded auto shutof
- Do not require hand touch (simply push with arm or elbow)
- Designed to reduce water waste
- Ideal for placement above existing bubbler systems
- Available in 2, 3 and 4 tap refill solutions
- Made from high quality stainless steel
- Strong and vandal resistant



Technical Specifications

Total Height	155mm
Width	746mm, 1143mm or 1548mm



Model Selection

AC-UFF-DFBF200WM	BF200WM 2 Tap Bottle Refill Strip - Standard
AC-UFF-DFBF200WM3T	BF200WM 3 Tap Refill Strip - Standard
AC-UFF-DFBF200WM4T	BF200WM 4 Tap Refill Strip - Standard
AC-UFF-DFBF200WM-BANNER	BF200WM - Refill Banner

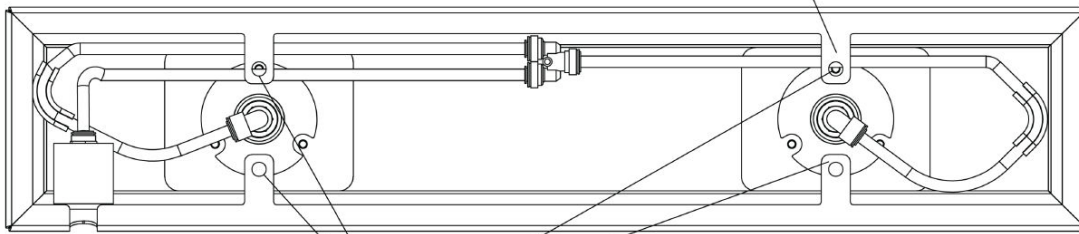
Your Partner in Cool.

**AQUA
COOLER**

TECHNICAL SPECIFICATIONS

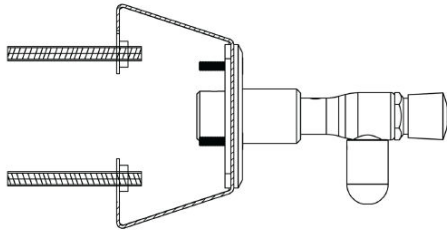
DIAGRAM A

4 X OFF MOUNTING TAB POINTS



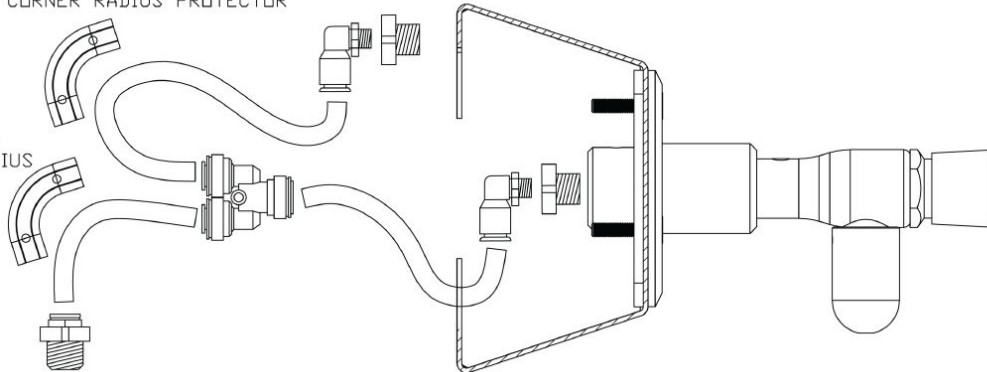
Ø10MM HOLE FOR M8 DYNO BOLTS
4 X OFF POSITIONS

RECOMMENDED 4 X OFF
M8 X 75MM DYNO BOLTS



JOHN GUEST
CORNER RADIUS PROTECTOR

JOHN GUEST
CORNER RADIUS
PROTECTOR



PLEASE NOTE:

DIAGRAM ILLUSTRATES PLUMBING REQUIREMENT.
ALL COMPONENTS WILL BE HOUSED INSIDE BOTTLE
FILLER BODY

Your Partner in Cool.

AQUA
COOLER